

SEE PLATE #8

SEE PLATE #8

SEE PLATE #10

#10

PLATE

SEE

SEE

SEE PLATE #18

SEE PLATE #18

#19

LOWER MAIN STREET PARK  
BOROUGH OF GLEN ROCK  
Exempted  
14.969 Acres  
30

HAWTHORNE

OF

BOROUGH

UTTER AVENUE

REA AVENUE

PARKER AV

DIXIE AVENUE

CENTRAL AVENUE

PRINCETON PL.

GRANDVIEW AVENUE

FAIRVIEW AVENUE

GOODRIET PL.

SERAFIN PL.

WILLIAM PL.

CAMBRIDGE PLACE

ETON PL.

BOULEVARD

STATE

CONRAIL (FORMERLY ERIE LACKAWANNA)  
MAIN STREET  
PATERSON & BRANCH  
RAMAPO CLASS I STREET

BIRCHWOOD RD.

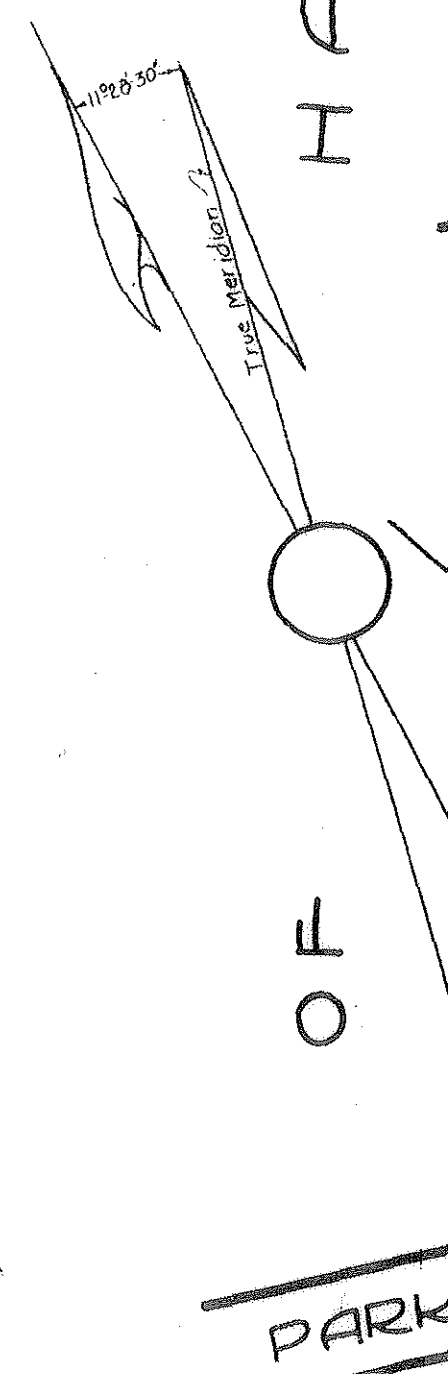
TONAWANDA ROAD

ROXBURY PLACE

CUMBERLAND ROAD

THORNBURY AVENUE

TAX MAP  
BOROUGH OF GLEN ROCK  
BERGEN COUNTY NEW JERSEY  
SCALE 1" = 100' MARCH 1, 1932  
FRANK M. EVANS  
96 RODNEY STREET  
GLEN ROCK, N. J.



ROAD WIDENING EASEMENT TO COUNTY OF BERGEN

